

polylac

gizir[®]
WOOD PRODUCTS



excellent
scratch resistance



No trees
have been cut
for this catalogue.

• EN

exclusive / ecological / resistant


**WORLDWIDE
IN OVER**



COUNTRIES

 **RELIABILITY**

Reliability is the overall brand promise at Gizir. In fact, it is our most important commitment to our costumers.

 **QUALITY**

We, at Gizir, strive to provide our customers with products and services that meet & even exceed their expectations.

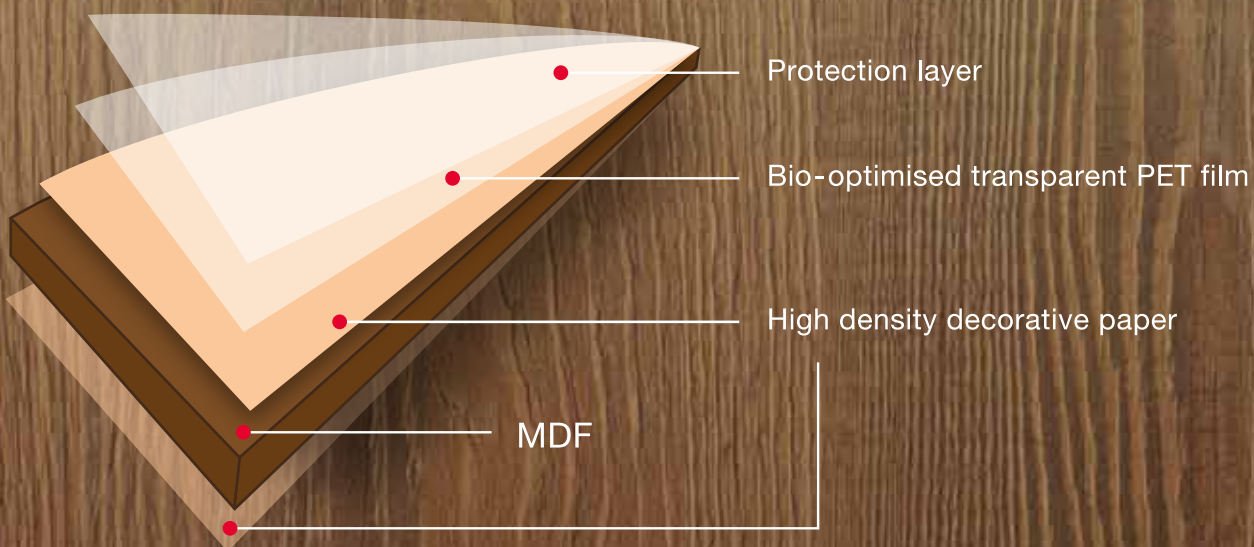
 **DESIGN**

We are always inspired from nature while creating new materials.

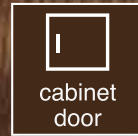
WHAT IS *polylac* ?

Polylac is an ecological multi-layered decorative panel, with the highest scratch and heat resistance on the market. It also has the highest gloss level in the industry with a mirror like reflection.

Polylac panel is made by pressing a high-density decorative paper to MDF. A specially developed bio-optimised transparent PET film is then laminated on the surface to protect it from external factors.



polylac IS PERFECT FOR



FEATURES

- 100% **PVC free**,
- High gloss with mirror like finish,
- Scratch, stain & heat **resistant**,
- Smooth surface and **depth effect**,
- Cuts without cracking or chipping,
- **Very easy** to clean and maintain,
- Elegant European designs,
- Matching acrylic and ABS edge tape,
- Two-toned brushed aluminum with color edge tape.



WHY *polylac* ?

In the decorative panel industry, high gloss levels are easy to achieve, however higher the gloss, the lower the scratch resistance. Whereas Polylac, through extensive testing, has proved superior levels of glossiness while maintaining a very high scratch resistance.

Other panels might crack and chip during manufacturing process. Whereas Polylac, due to its flexible PET film, will not crack or chip, thus facilitating the edge banding process.

Polylac panels retain their original state without denting, chipping or cracking; while most of the other products deteriorate in time. **Making Polylac the ideal sustainable material for all your needs.**



Group 1: SOLID COLORS

Polylac panel dimensions (mm): 18 x 1220 x 2800 / 08 x 1220 x 2800

Matching edgebanding: ABS, acrylic, two-toned acrylic



9511

9520

9525

9527

9530

9540

9545

9570

Group 2: WOOD GRAIN COLORS

Polylac panel dimensions (mm): 18 x 1220 x 2800 / 08 x 1220 x 2800

Matching edgebanding: ABS, acrylic, two-toned acrylic



9110

9111

9112

9120

9121

9122

9130

9131

9132

9140

9141

9142

9150

9151

9152

9160

9161

9162

9170

9171

9172

Group 3: FANCY COLORS

Polylac panel dimensions (mm): 18 x 1220 x 2800

Matching edgebanding: ABS



9210



9211



9212



9220



9221



9222



9230



9231



9232



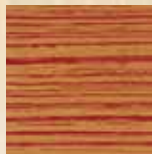
9251



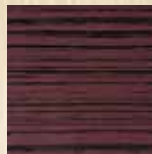
9252



9253



9254



9255



9256



9257



9258



9259



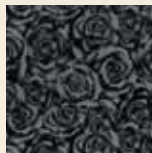
9260



9261



9262



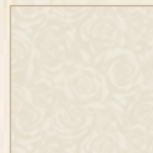
9263



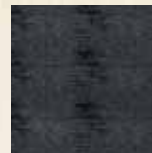
9264



9265



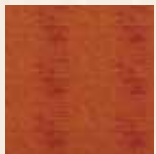
9266



9267



9268



9269



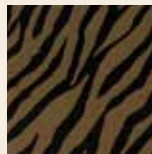
9270



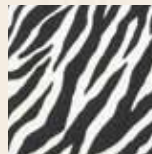
9271



9272



9273



9274



9275



9276



9277



9278



9279



9280



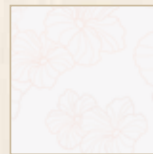
9281



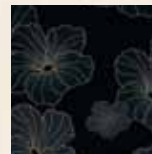
9282



9283



9284



9285



9286



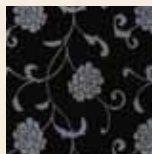
9287



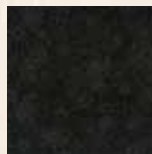
9288



9289



9290



9291

No	FEATURE	RESULT	STANDARD
1	Gloss level (60° angle)	99 GU	EN 14323 part 5.13
2	Scratch resistance	3,0 Newton (Class 4B)	DIN 68861 part 4
3	Assessment of surface resistance to wet heat (100°C)	5 (No change)	EN 12721:09
4	Assessment of surface resistance to dry heat (140°C)	5 (No change)	EN 12722:09
5	Surface abrasion resistance	4500 rev. (Class 4)	EN 14323 cls. 5.9
6	Behavior towards impact loading by falling steel ball	No Cracking	EN 14323 cls. 5.14
7	Test of water steam resistance	5 (No change)	EN 14323 cls. 5.11
8	Resistance to staining	5 (No change)	EN 14323 cls. 5.6
9	Assessment of surface resistance to chemical cold liquids (Acetic acid, acetone, ammonia solution, citric acid, cleaning agent, etc.)	5 (No change)	EN 12720:10
10	Colorfastness to light	4 / 5. Grade	EN 15187
11	Bending strength (*)	32 N / mm ²	EN 310
12	Modulus of elasticity in bending (*)	4441 N / mm ²	EN 310
13	Surface soundness (tensile strength) (*)	1,36 N / mm ²	EN 311
14	Tensile strength vertical to the surface (*)	0,54 N / mm ²	EN 319
15	Thickness tolerance	± 0,5 mm	Gizir
16	Bow tolerance	2,2 mm / 1 m	Gizir
17	Cold check (40 cycles, 1 h 60°C, 15 min. room temp., 1 h - 30°C, 15 min. room temp.)	No damage	TSE

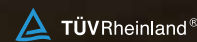
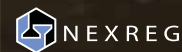
- (*) These values are weighted average of the test results.

- Above test results (1, 3, 4, 5, 6, 7, 8, 10, 11, 12, 13, 14) are made by TÜV Rheinland; 2, 9 and 17 are made by TSE.



Please contact your sales representative for FSC® product.

The mark of responsible forestry



JUTRAS
DISTRIBUTION INTERNATIONALE

jutrasedistribution.com

JUTRAS DISTRIBUTION INTERNATIONALE

843, BOULEVARD JEAN - PAUL - VINCENT, LONGUEUIL, QUEBEC, J4G 1R3, CANADA
T. 1.514.360.4547 F. 1.514.360.4548 Toll Free: 1.855.214.2464 info@jutrasedistribution.com