

EXP

QUERKUS
finest oak collection



“Querkus” is Decospan's ecological answer to the contemporary interior design trends in Northern Europe. A sustainably designed product that combines authentic materials with engineered stability, Querkus reflects the values of conservation without breaking with our rich past.

The Querkus line starts with Oak as its medium. Decospan sources both sustainably harvested FSC® Certified European white oak and reclaimed oak timbers to compose their Querkus panels. These sources are sparingly used to create a natural looking board with the minimal amount of material, successfully marrying the look of a solid plank with a more sustainable format.

Using unique and innovative veneer matching techniques, boards are created that give a designer unprecedented choice in a wood panel product. Wire brushing and patented “saw effect” scratching options impart character, texture and authenticity to the meticulously assembled board. No matter how they’re finished, Querkus panels look natural.

Let yourself be inspired...



The collection

7 designs available directly from stock



1

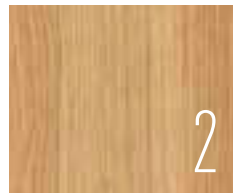
LOOK



THICKNESS



TOUCH



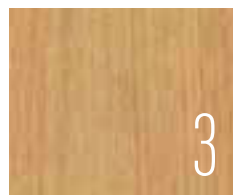
2

Oak Natural

1 Oak Natural Adagio

1 mm

Brushed type B2



3

2 Oak Natural Allegro

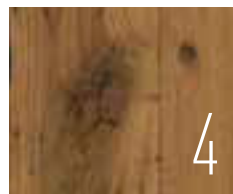
1 mm

Brushed type B2

3 Oak Natural Vivace

1 mm

Scratched type S3



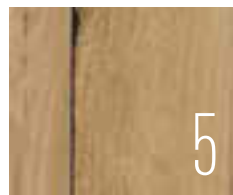
4

Oak Vintage

4 Oak Vintage Hoboken

1 mm

Brushed type B1

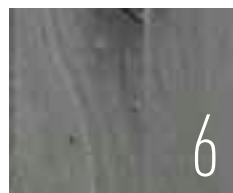


5

5 Oak Vintage Harlem

1 mm

Brushed type B1



6

6 Oak Vintage Baltimore

1 mm

Brushed type B1



7

Oak Smoked

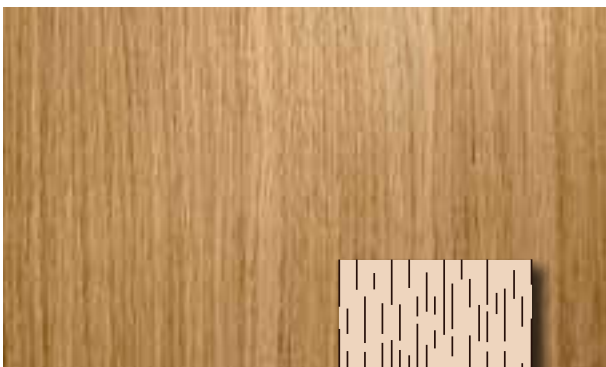
7 Oak Smoked Robusta

0,6 mm

Brushed type B1

Additional LOOKS, Veneer THICKNESSES and TOUCHES available by CUSTOM ORDER.
See www.querkusdecospan.com for these options and more information.

Brushing or scratching the wood veneer makes it possible to bring out more clearly the natural structure of the wood.



 **Brushed type B1**

With this technique, the softer summer wood is lightly brushed. The B1 brushing gives a subtle impression of depth to the surface and adds to the natural feel.

Please note: this technique is only applied to the front of the panel.



 **Brushed type B2**

The deep brushing approximates to sand blasting of the wood. With this process, it is not only the soft summer wood that is brushed away but a deeper structure is brought to all areas of the wood.

This finishing is always done on both sides of the board to ensure the stability of the panel as much as possible.



 **Scratched type S3**

This treatment creates authenticity by applying a unique pattern to the surface. Decospan can create a band saw effect on the surface using a patented procedure. By scratching the veneer the surface gets a rough sawn structure and gives the panel a solid look.



PURITY

For 'Oak Natural', only carefully selected oak is used, sourced from tightly controlled growing areas in Croatia. This is guaranteed by the Forest Stewardship Council (FSC®) certificate. You can opt for the pure beauty of this oak with a clear conscience.

These sheets have not yet been finished and can therefore be stained and varnished to your own taste. A wood oil also offers a good protection while maintaining the natural feel and genuine warmth of the decorative veneer.

1. Oak Natural Adagio





2. Oak Natural Allegro





3. Oak Natural Vivace







AUTHENTICITY

We can revive a piece of the past by giving these old materials a new use. In their past life, these materials were used for Railway Trucks. Decospan upcycles these materials by giving them a new life in your interior.

4. Oak Vintage Hoboken



👁️ Oak Vintage Hoboken 📏 1 mm 🖐️ Brushed type B1 - Finish: Oil mat - Realization: Architects RT



5. Oak Vintage Harlem



👁️ Oak Vintage Harlem 📏 1 mm 🤝 Brushed type B1 - Finish : lacquer mat - Realization: LV-architects



6. Oak Vintage Baltimore







RUGGED

'Oak Smoked' has a very strong feel. Smoking the Croatian oak in the core gives it an appearance that is full of class. The traditional smoking process and typical properties of the oak gives it a look of strength.

7. Oak Smoked Robusta





👁️ Oak Smoked Robusta

Attention: The color of the wood changes by sanding.

PRODUCT

A. PANEL



TOP LAYER (A quality):

The top layer of the panel is a sheet of real wood oak veneer according to the specific look, thickness and touch as chosen.

PANEL:

Only high quality MDF panels are used for this collection. format 2500 x 1240 x 18mm - '4 x 8' x 3/4" (48.8" x 98.4" x 3/4")

BALANCING LAYER:

A veneered panel always needs a backing to guarantee the stability of the panel.

The back of the panel is finished with an Oak Natural B-grade veneer, according to the characteristics as shown in the adjacent table.

Be aware that the backing of Oak Vintage and Oak Smoked is also an Oak Natural b-grade veneer!

	B*
Look	Natural Oak not specified
Mirror	large mirror
Colour variations	wide variation is accepted
Sapwood	limited allowed
Jointing method	mill's choice
Mineral	
Worm holes	
Open defects	allowed
Heavy flake	
Open joints	
Preparatory filling	on request

We are happy to help you! Upon request, also A/A quality panels and other dimensions are possible. Decospan is FSC® and PEFC™ certified. Also Querkus can be delivered with these labels on demand. Please note that this will require a longer lead time.



"Querkus" is synonymous with a **unique and superior quality product**. You should therefore only place your trust in panels on which you can see the **Decospan logos on the side**. The stamp also gives a production date so that each panel can be clearly traced.

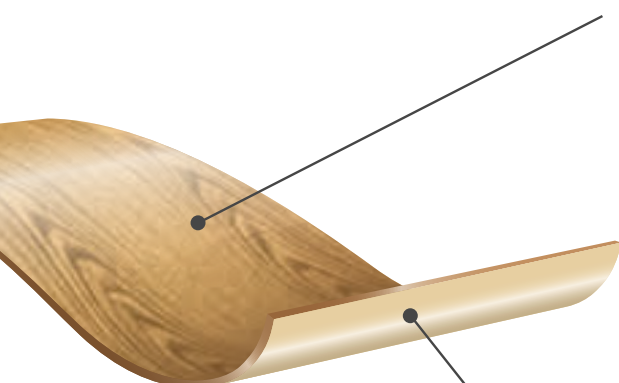
In this way, Decospan seeks to distinguish itself and guarantee its quality!

B. FLEX

Flex is a veneer layon that is very easy to work with. The veneer layon is first pressed onto paper and the wood fibres are then broken. This gives us a flexible strip of veneer wood.

Flexibility is the key features of this product.

Applications : curved surfaces, edge bandings, doors, veneers, to press panels,...



TOP LAYER: The Querkus veneer layon is always of an A quality. Possibilities:



LOOK: Oak Natural, Oak Smoked of Oak Vintage



THICKNESS:

Oak Natural & Oak Smoked = 0,6 mm

Oak Vintage = 1 mm



TOUCH:

- **Plain** (Presanded grain 120)

Oak Natural & Oak Smoked - format 3050x1240 mm - 4' x 10' (48.8" x 120.1")

Oak Vintage - format 2500x1240 mm - 4' x 8' (48.8" x 98.4")

can be shipped from our plant in Belgium within 72 hours

- **Brushed type B1**

only possible with Oak Natural and Oak Smoked

format 2750x1220 mm - 4' x 9' (48.0" x 108.3")

can be delivered 15 days after order all over Europe

- **Scratched type S1**

only possible with Oak Natural

format 2750x1220 mm - 4' x 9' (48.0" x 108.3")

can be shipped from our plant in Belgium within 72 hours

Querkus Flex is never treated with wood filler.

The gluing of the top- and backing layer is done with a formaldehyde-free glue.



BACKING LAYER: Paper backing in the colour of the chosen LOOK.

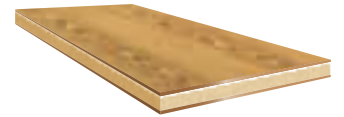
Querkus flex is packed in **this packaging**. Only this packaging guarantees **Decospan quality!**

For gluing the product, we strongly recommend that you follow our instructions. These can be found in each box or on our website: www.querkusdecospan.com.



The collection

Overview



LOOK			PANELS	
			Thickness top layer 	Touch
			OAK NATURAL	
2. Oak Natural Allegro	1 mm	Brushed Type B2		
3. Oak Natural Vivace	1 mm	Scratched Type S3		
OAK VINTAGE		4. Oak Vintage Hoboken	1 mm	Brushed Type B1
		5. Oak Vintage Harlem	1 mm	Brushed Type B1
		6. Oak Vintage Baltimore	1 mm	Brushed Type B1
OAK SMOKED		7. Oak Smoked Robusta	0,6 mm	Brushed Type B1



FLEX		MATCHING EDGE BANDINGS			
Thickness	Touch	 50 m / per roll			Ref. no.
0,6 mm	Plain or Brushed Type B1	Brushed	26 mm	1 mm	Q-ED01B26-1
			46 mm	1,9 mm	Q-ED01B26-2
0,6 mm	Plain or Brushed Type B1	Brushed	26 mm	1 mm	Q-ED01B46-1
			46 mm	1,9 mm	Q-ED01B46-2
0,6 mm	Plain or Brushed Type B1	Scratched	26 mm	0,8 mm	Q-ED01S26-1
			46 mm	1,9 mm	Q-ED01S26-2
0,6 mm	Plain	Brushed	26 mm	1 mm	Q-ED02B26-1
			46 mm	1 mm	Q-ED02B46-1
0,6 mm	Plain	Brushed	26 mm	1 mm	Q-ED03B26-1
			46 mm	1 mm	Q-ED03B46-1
0,6 mm	Plain	Brushed	26 mm	1 mm	Q-ED04B26-1
			46 mm	1 mm	Q-ED04B46-1
0,6 mm	Plain or Brushed Type B1	Brushed	26 mm	1 mm	Q-ED05B26-1
			46 mm	1 mm	Q-ED05B46-1

QUERKUS

finest oak collection

Find your authorized distributor on
www.querkusdecospan.com



Industriezone Grensland
Lageweg 33
8930 Menen - Belgium
T +32 56 52 88 00
E info@decospan.com

© Decospan 2016 - Nothing from this brochure may be reproduced without written prior permission.

Please note that the information in this brochure may be outdated and a new version may already have been issued. That is why we recommend you to always consult our website to download the most recent version. The photos of the different wood species, as shown in this brochure, are a representation of a unique part of wood and are not binding for future deliveries.

Decospan is committed to the continuous improvement of its products and services, therefore the actual products may differ from the products and pictures in this brochure. Decospan disclaims any liability pursuant to the variations that may occur between the products and pictures in this brochure and the actual products. All content in this brochure is for information purposes only and no rights can be obtained therefrom.

The processor is always expected to do an incoming inspection of the products before further processing. Once the processing is started (sawing, sanding, staining, lacquering...) the delivery is considered as accepted. All treatments as to staining and lacquering of a veneered panel is beyond the responsibility of the manufacturer Decospan.

